



PSM CHARITY  
"EMPOWER. THRIVE. TOGETHER."



# MISSION

---

Empowering children and women in communities.

**VISION** - A happy and dignified life  
for children and women.



Love at Home



*“Meet Juliet and Phoebe, inspiring young girls with visual impairments, embracing support with radiant hope.”*

## PSM Charity Profile

Incorporated in the year 2020, PSM Charity has been a beacon of hope and positive transformation,

Tirelessly working for over four years to engrain its ethos of community upliftment and welfare. In a world where socio-economic disparities often overshadow potential, we aim to be architects of change, ensuring that communities don't just survive, but thrive.

## Our Impactful Journey

### Holistic Mental Health Services

Venturing into the heartlands of Nakaseke and Mityana Districts, PSM Charity has brought solace and support to those battling mental health challenges. Our initiatives are not just about counseling sessions; they encompass a holistic approach that intertwines traditional mental health practices with modern methodologies. In every endeavor, we strive to ensure that mental health is not just addressed but becomes a part of the ongoing community conversation.

### Water - The Elixir of Life

Recognizing the elemental role of clean water, we have constructed 50 spring wells in diverse districts including Mukono, Lwengo, and Kamuli. This initiative transcends mere access, positively impacting over 25,000 lives by eliminating waterborne diseases, empowering communities, and bringing vitality to everyday life.

## Empowering Youth and Mothers

Through skill development and vocational training, we've empowered 250 youths and young mothers, turning dreams into tangible realities. From tailoring to entrepreneurship, our beneficiaries receive not just training but also start-up kits, planting seeds for self-sustaining futures.

## Relief Efforts and Community Support

Our relief outreach in Mende Sub-county, Wakiso District, and Kiboga has been a lifeline to communities facing adversities. Additionally, our sustained efforts have embraced 316 needy children, offering them not just the necessities like food and clothing but a chance at a brighter future through education.

## Focused Specialized Assistance

Our compassion finds expression in the tailored support we provide, such as aiding a single mother with two visually-impaired children. Beyond providing relief and educational support, we've bridged connections for potential life-altering medical interventions.





Through Healing Horizons, we aim to extend our reach, catering to both boys and girls, men and women, who have been marginalized due to their mental health conditions. By focusing on inclusivity, we seek to establish a foundation for healthier communities.

PSM Charity, through initiatives like Healing Horizons, seeks to continue its legacy of positive impact and transformative change.

## *Upcoming Endeavors* *Healing Horizons Initiative*

PSM Charity is steadfastly preparing to embark on a transformative journey to bring vital mental health services to the doorstep of communities in Uganda. The initiative, named Healing Horizons, is an ambitious endeavor that reflects our ongoing commitment to health and wellbeing.

Recognizing the acute shortage of mental health facilities and the affordability of medication in Uganda, Healing Horizons aspires to make a substantial difference. The Initiative is planned to be a beacon of hope for many, especially in Mityana and Nakaseke Districts. The goal is to establish well-equipped mental health centers that will serve as sanctuaries of healing, counseling, and support.

The centers will focus on providing accessible and affordable mental health services, ensuring that the dearth of facilities and expensive medication no longer serve as barriers to receiving care. The plan also includes ensuring a steady supply of necessary medications and therapeutic interventions, potentially alleviating the accumulated burden on patients.

By addressing critical needs and fostering an environment of healing and support, we aim to create ripple effects of wellbeing and resilience across Ugandan communities. Your support and partnership in this endeavor could amplify our efforts, ensuring that mental health care is not a privilege but a right accessible to all.

## *Kids Safe Harbor Program*

Parallel to our mental health initiative, PSM Charity is keen on strengthening our existing Kids Safe Harbor Program. Currently, we have 316 needy children under our wing, providing them with essentials such as food, clothing, education, and emotional support. Our vision is to expand this program, reaching out to even more vulnerable children in need of care and support. We recognize that every child deserves a chance at a brighter future, and through additional funding, we aim to extend our protective and nurturing environment to more children in need.



*“Surrounded by laughter and camaraderie, children savor a hearty meal together under the nurturing umbrella of the Kids Safe Harbor Program, where every bite is a step towards a brighter future.”*

**PSM Charity strives to be a pillar of support and transformative change in Ugandan communities. Through our Healing Horizons Initiative and Minors’ Relief Program, we are committed to making lasting changes in the lives of those most in need. By addressing mental health disparities and fostering an environment of nurturing and care for needy children, we seek to create a foundation for healthier, thriving communities. Your support could be instrumental in amplifying our efforts and ensuring that both mental health care and child welfare are accessible to all those who need it.**

## **Central Uganda WASH-ECO Intervention**

**PSM Charity is steadfast in its commitment to fostering a harmonious relationship between communities and their environment. Our Central Uganda WASH-ECO Intervention, known as the CUWEI Program, embodies this commitment. This program has been meticulously designed to address critical needs in water, sanitation, and hygiene (WASH), while concurrently contributing to eco-friendly practices and climate resilience in Central Uganda.**

**In line with our holistic approach, the CUWEI Program seamlessly integrates several key facets of community welfare.**

**From ensuring access to clean water to promoting sustainable practices, the initiative is a testament to our belief in creating solutions that are both sustainable and beneficial for the community.**



*By intertwining water accessibility with ecological initiatives, the CUWEI Program aims to foster an environment where communities not only survive but thrive.*

*PSM Charity is currently seeking partnerships and funding to bolster the CUWEI Program, ensuring that its positive impact is felt across more communities in Central Uganda.*

## *Benefits of Partnership*

Partnering with PSM Charity offers an opportunity to contribute to transformative community work. Our transparent and impactful programs ensure that every contribution directly influences positive change, fostering a lasting impact on the lives of beneficiaries

## *Financial Details*

Account Name: PSM Charity Ltd  
Bank Name: STANDARD CHARTERED BANK  
Account Number: 8702887146900  
Branch: CITY BRANCH  
SWIFT/BIC Code: SCBLUGKAXXX  
IBAN: None  
Tax ID: 1022348135  
Registered Charity Number: 6145

Note: "90% of all donations go directly to our community programs, ensuring your contribution makes a maximum impact."

## *Contact Details*

Address:  
Plot 934, Naalya Close  
Kampala, Wakiso, 10308  
Uganda  
Phone: +256414672954  
Email: [impact@psmcharity.org](mailto:impact@psmcharity.org)  
Website: <https://www.psmcharity.org/>  
Social Media:  
• Facebook: <https://www.facebook.com/MakingLifeHopeful>  
• Twitter: <https://twitter.com/psmorganization>  
• Instagram: <https://www.instagram.com/psmcharity/>

## *Engagement Opportunities*

We welcome partnerships, donations, and volunteers to join hands with us in making a significant impact in our communities. Whether through financial support or hands-on involvement, every contribution is valuable.

In embracing PSM Charity's mission, you are not just contributing funds but investing in the resilient spirit of communities. We have been a steadfast ally to those in need, and with your support, we can amplify our reach and impact. Join us in this journey of transformation and empowerment.





**KSHIP**

# PSM CHARITY BOARD OF DIRECTORS



**ENG. GABOINE ANTHONY**  
BOARD CHAIRMAN



**ENG. OCHIENG EMMANUEL**  
VICE CHAIRPERSON



**JOAN COMFORT BALESE**  
TREASURER



**MISS NANSEREKO**



**ENG. SIMON L SAJJA**  
DIR. PROJECTS & RESEARCH



**DR. SSEKYEWA JULIUS**  
HEALTH, SAFETY & ENVIRONMENT



**ENG. MANGENI SOLOMON**  
PATRON

## PSM CHARITY LEADERSHIP



**KINENE JOHN**  
CEO



**NKINZI RUTH**  
EXECUTIVE DIR



**NAKKAZI CATE**  
DIR FINANCE



**SSEMAKULA SAM** - HRD



**SSENDEDO J**  
DIR PROGRAMS



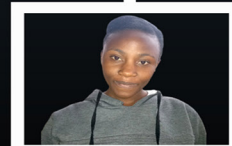
**NAMWEBYA MAUREEN**  
ACCOUNTS OFFICER



**ASIIMWE CHRISTINE**  
ADMIN ASISTANT



**GRACE GABOINE**  
M&E MAGAGER



**NAGAWA TRANELLA**  
PROJECTS MANAGER



**NYENDE JOHN**  
PROJECTS OFFICER